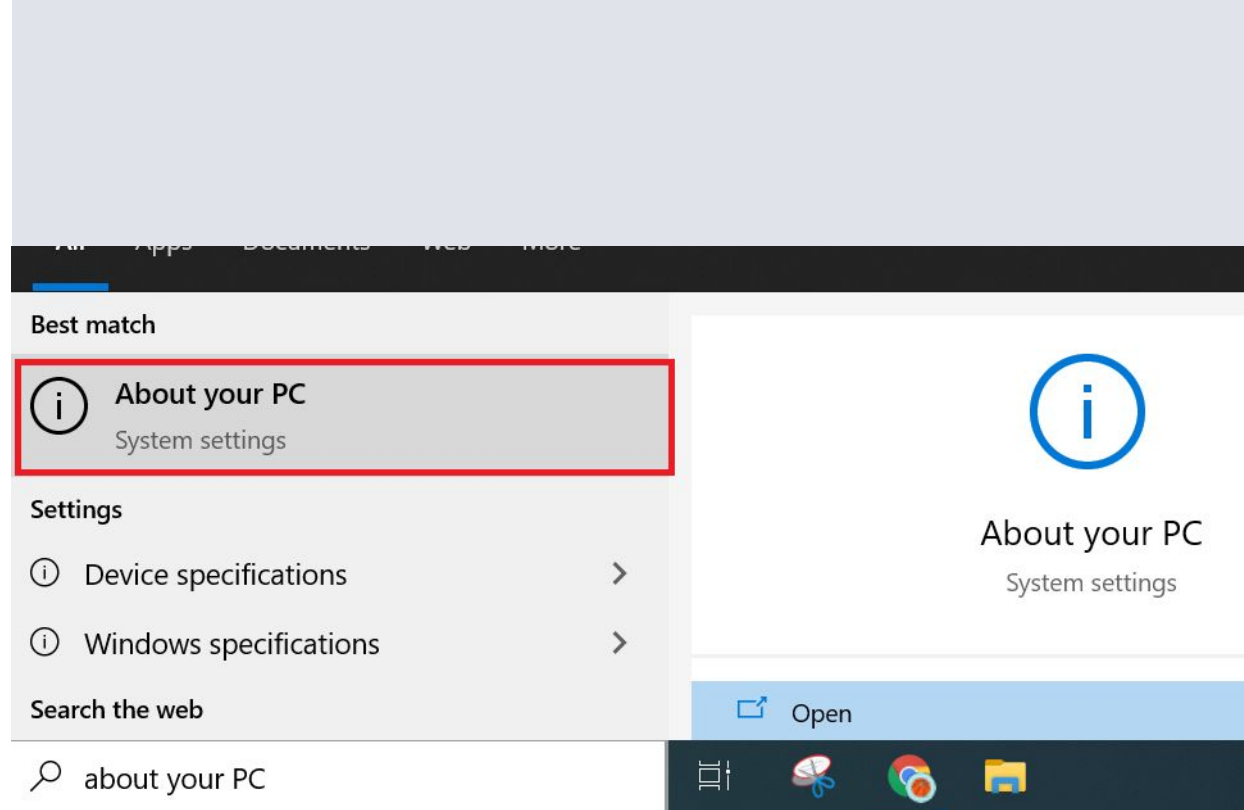


# **Check System Configuration on Windows**

- Check System Configuration on Windows
- Select the **Start button**
- Search “**About your PC**” and open “**About your PC System settings**”



- Check whether your computer system is **32-bit or 64 bit.**

## Device specifications

### LG PC

Device name	Irrelevant-Laptop
Processor	Intel(R) Core(TM) i5-8250U CPU @ 1.60GHz 1.80 GHz
Installed RAM	8.00 GB (7.84 GB usable)
Device ID	
Product ID	
System type	64-bit operating system, x64-based processor
Pen and touch	No pen or touch input is available for this display

Note: There are certain libraries like TensorFlow which require a 64-bit version of Python.

If you have a 32-bit system, then these libraries might not work on your system.

**Download Correct Version of Anaconda**

- Google “**Anaconda navigator**” or click on the link [here](#)
- Click on the “**Download**” button

## Individual Edition

# Your data science toolkit

With over 25 million users worldwide, the open-source Individual Edition (Distribution) is the easiest way to perform Python/R data science and machine learning on a single machine. Developed for solo practitioners, it is the toolkit that equips you to work with thousands of open-source packages and libraries.



Download

- At the bottom of the webpage, select the **correct version**

Windows 

Python 3.8

64-Bit Graphical Installer (477 MB)

32-Bit Graphical Installer (409 MB)

# **Install Anaconda**



- Once you click on the correct version, your download should start immediately
- Click on the **setup file**

# Thank you for downloading

If you are using Anaconda in a commercial environment with more than 200 employees, you need to purchase a Commercial Edition license.



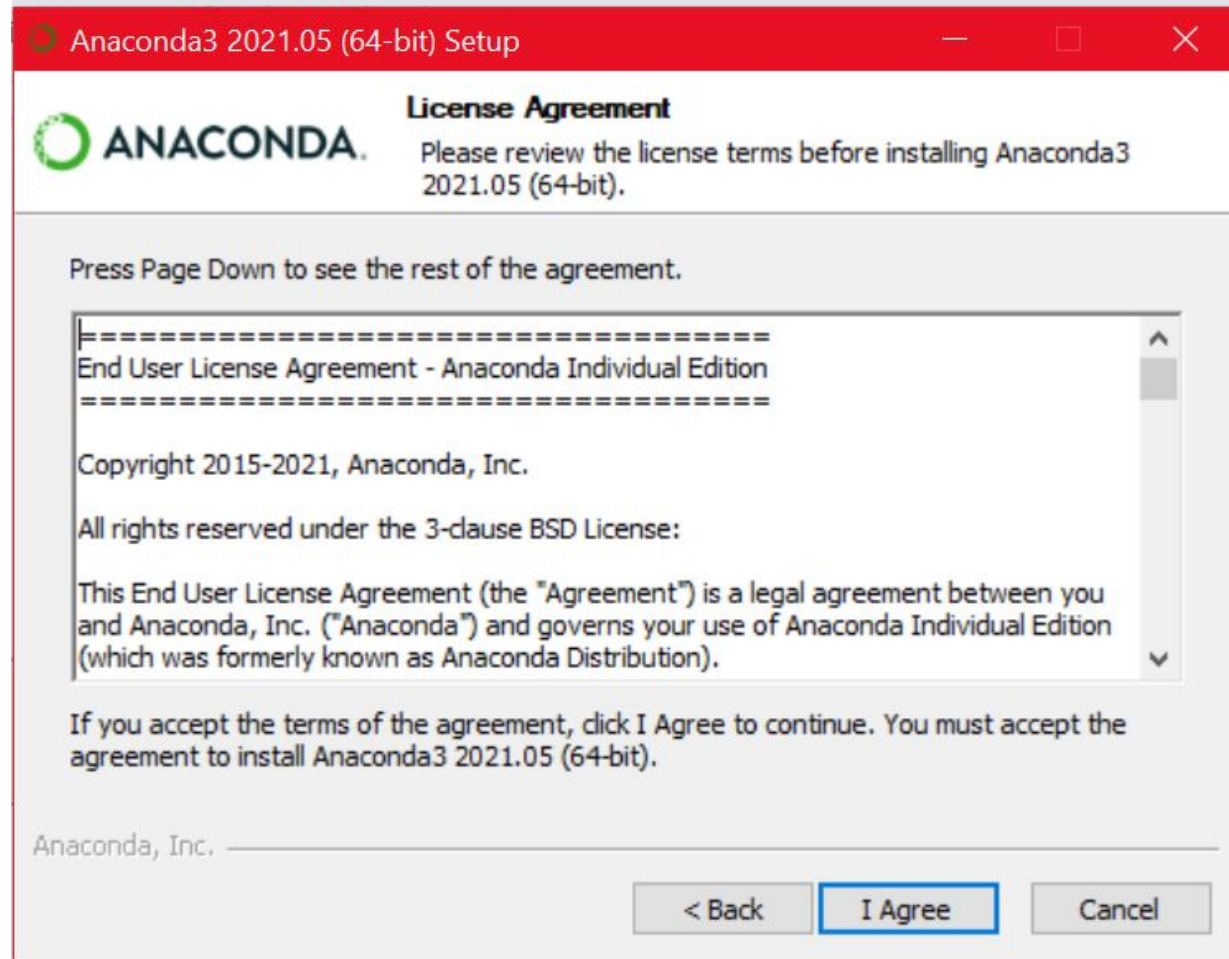
Anaconda3-2021.0....exe

31.0/477 MB, 2 mins left

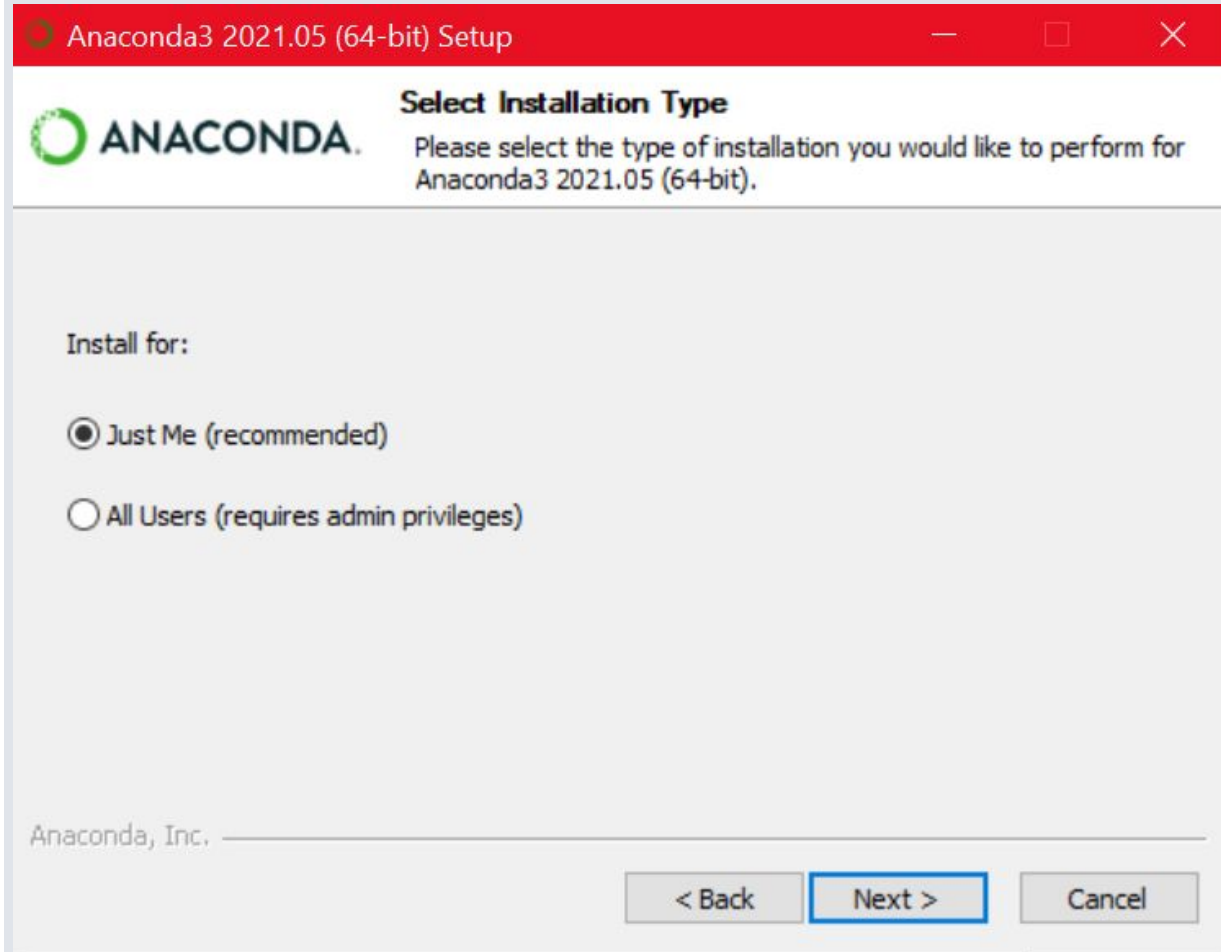
- Click “Next”



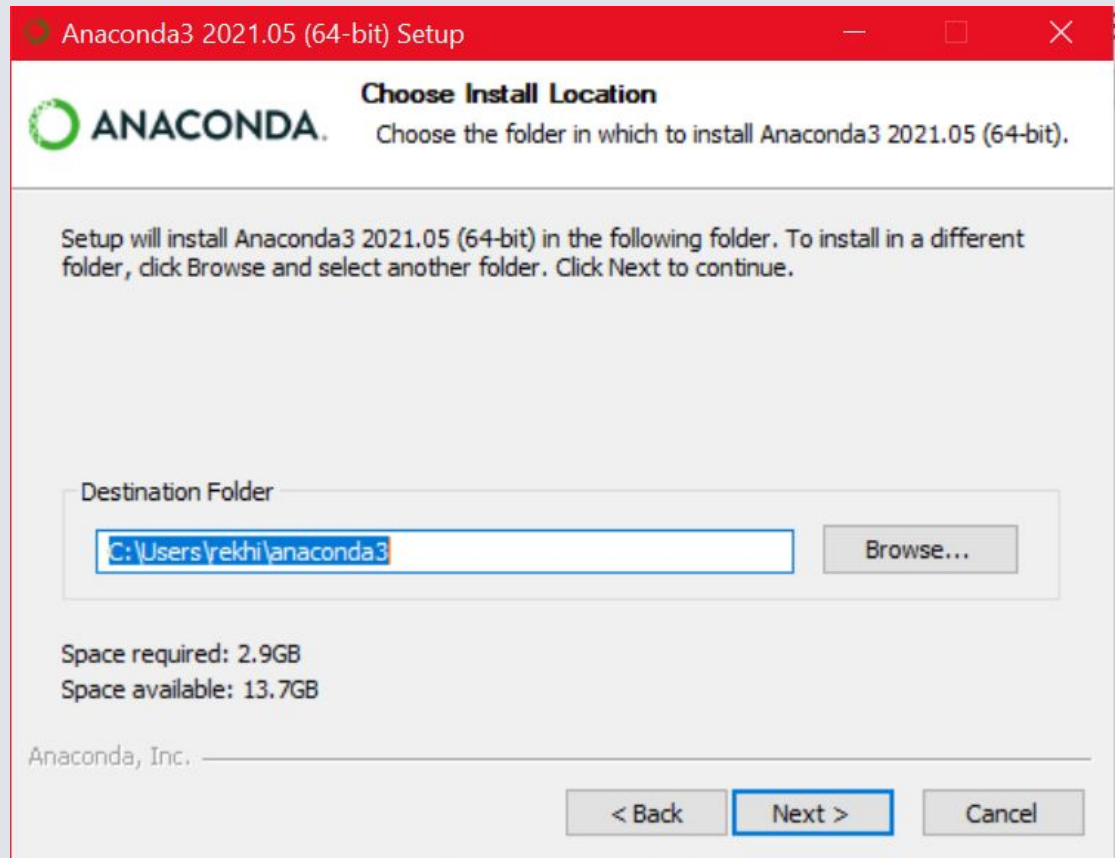
- The standard **terms and conditions** are provided
- Click **“I Agree”**



- If you share the system with others, you can simply select **"Just Me"**
- Click **"Next"**

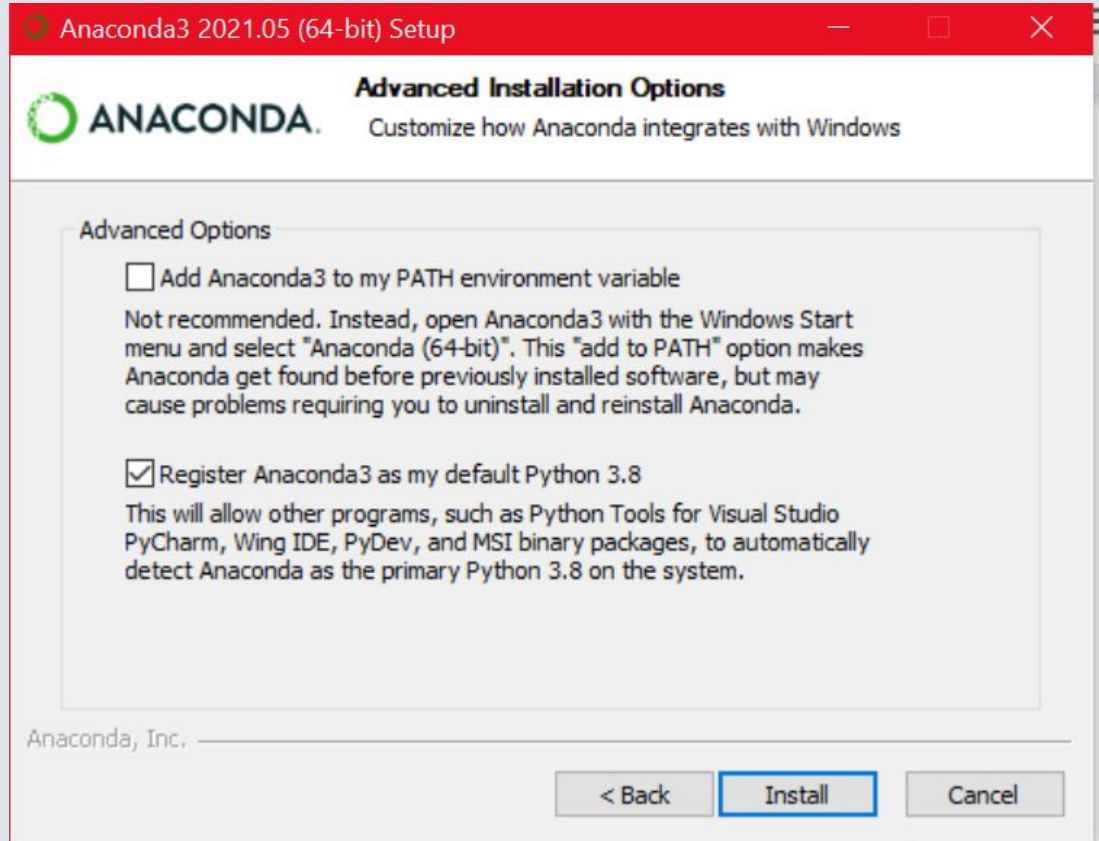


- Select the **destination folder**
- Click **“Next”**

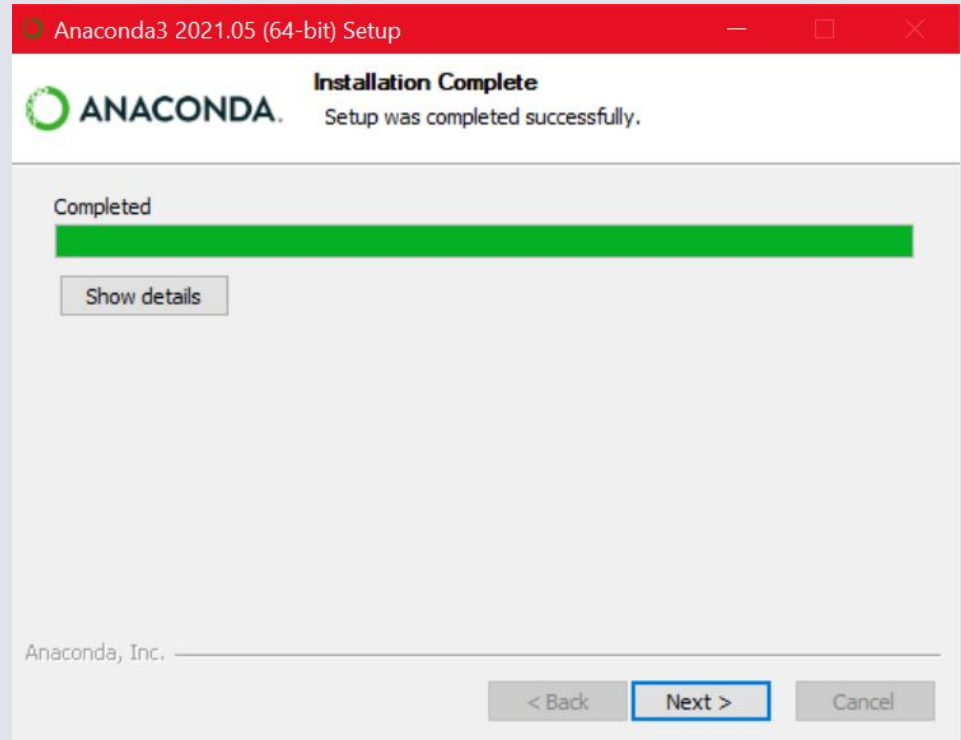


- Select “**Register Anaconda3 as my default Python 3.8**”
- Click “**Install**”

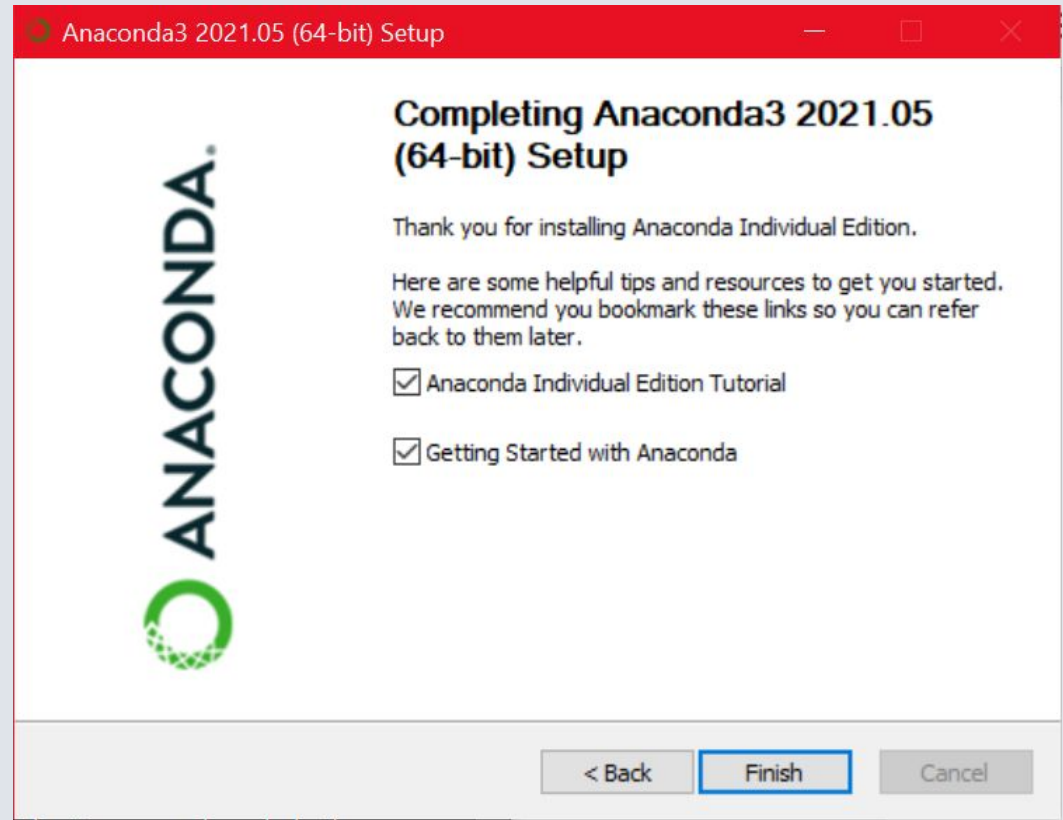
**Note:** Selecting the first option might lead to issues and we recommend selecting the second checkbox



- Click “Next”



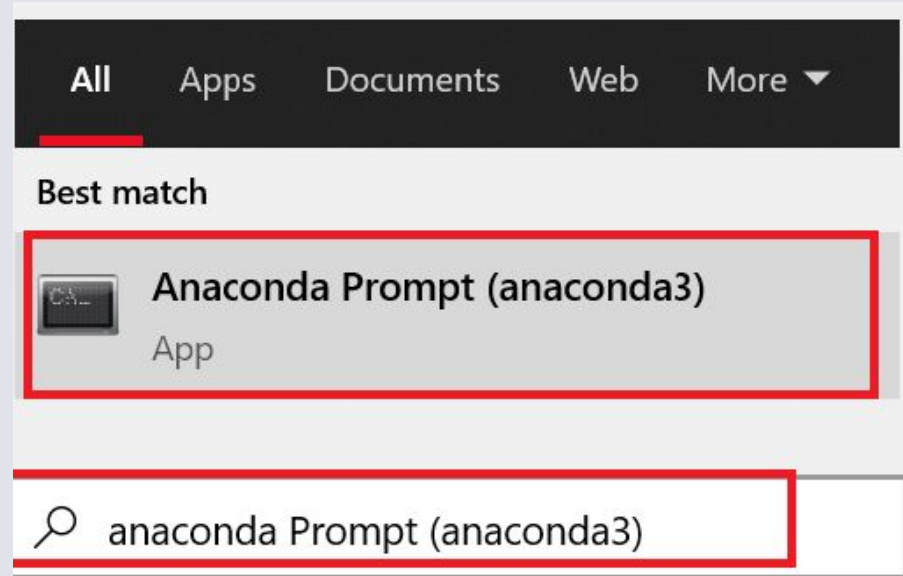
- **Anaconda is installed**



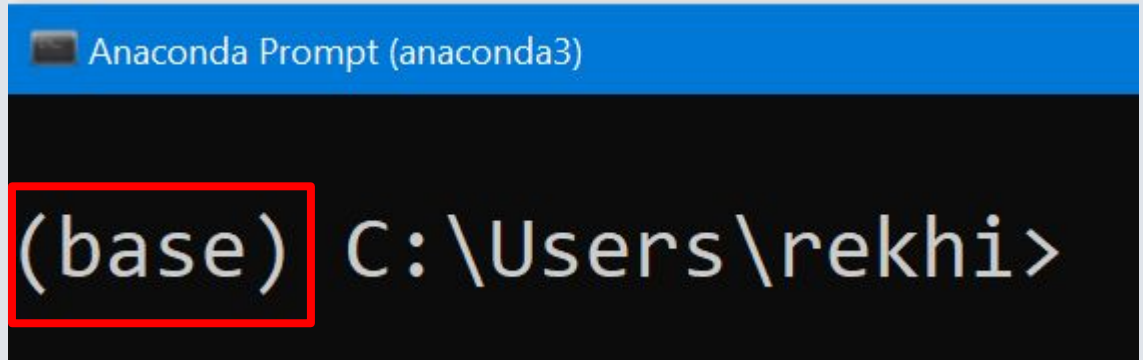


# **How to Start Anaconda on Your System?**

- Search “**Anaconda Prompt**” on your search bar



- "base" tells us that the active Python environment is the "base" environment.



```
Anaconda Prompt (anaconda3)  
(base) C:\Users\rekhi>
```

The image shows a terminal window titled "Anaconda Prompt (anaconda3)". The prompt is "(base) C:\Users\rekhi>". The text "(base)" is highlighted with a red rectangular box, indicating the active Python environment.